



Made in Italy
BIONDI



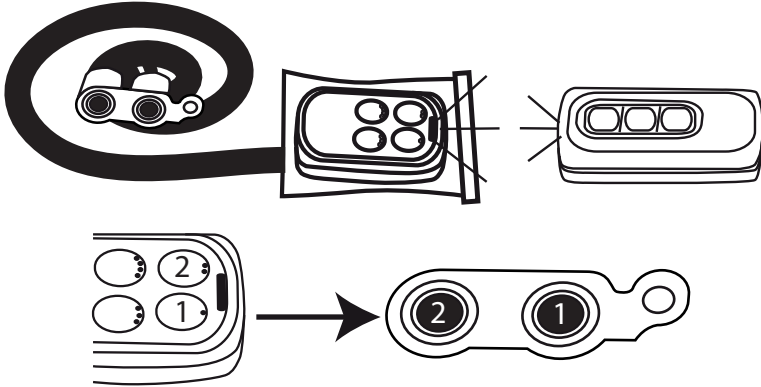
SC0002

Radiocomando semiuniversale con doppio pulsante per Cancelli, Bandoni, Sbarre automatici.
Semi-universal radio remote control with double button for gates, shutters, bars, automatic.

Biondi Srl - Via Ponte a Giogoli n.21 - 50019 Sesto Fiorentino (FI)

www.biondiaccessori.it

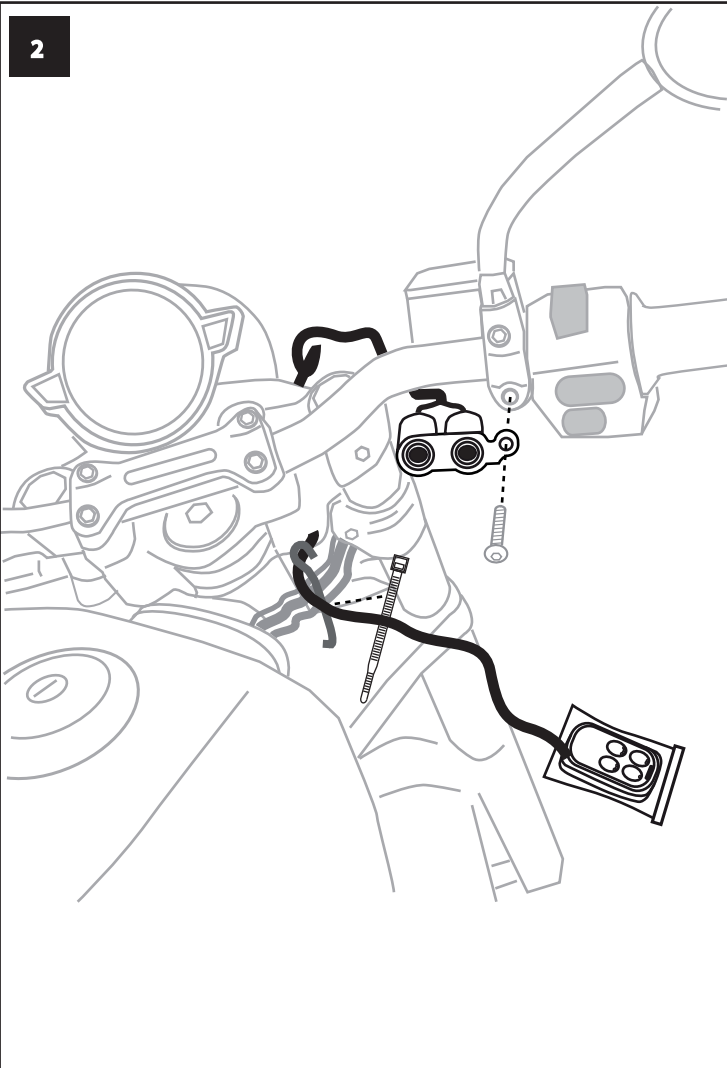
1 Duplicazione Radiocomando: Remote Control Duplication:



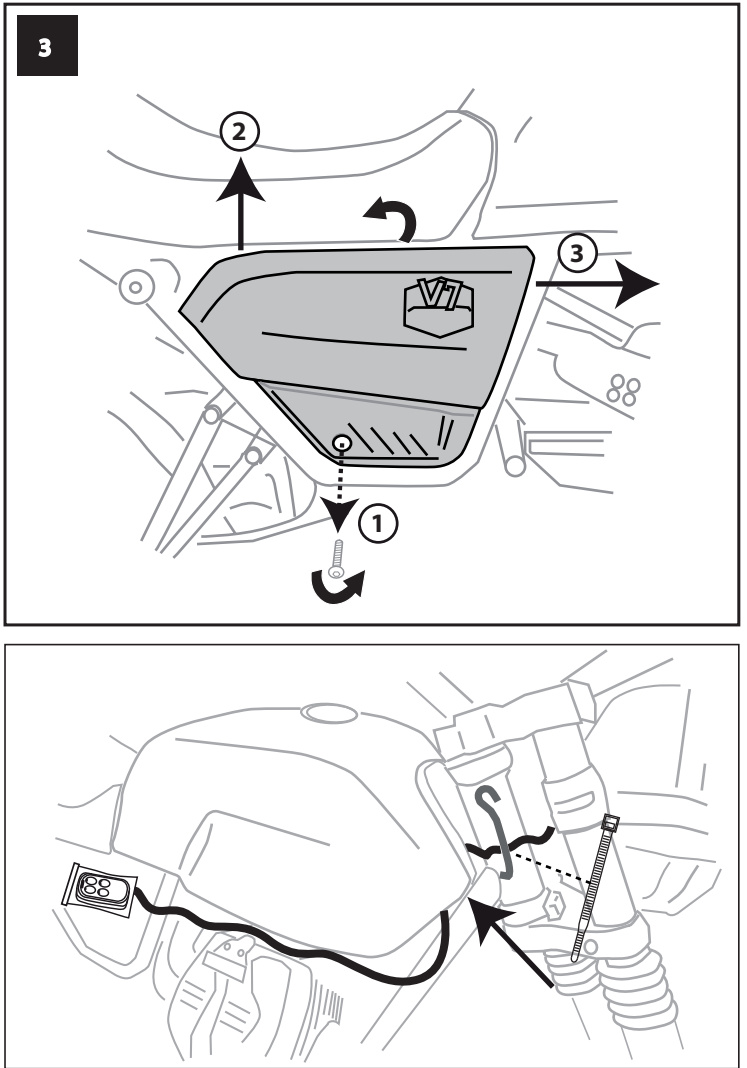
- Radiocomando VHY EVO 15.0 compatibile con i codici rolling-code e fissi da 300 a 868 Mhz
- Individua marca e modello dei tuoi automatismi e verifica la compatibilità con i tuoi automatismi.
- Consulta Sul Ns. sito internet (www.biondiaccessori.it) la relativa procedura di duplicazione
- Effettua la duplicazione prima del montaggio sulla moto
- VHY EVO 15.0 remote control compatible with codes rolling-code and fixed from 300 to 868 Mhz
- Identify the make and model of your automatisms and verify compatibility with your automatisms.
- Consult on our website (www.biondiaccessori.eu) the related duplication procedure
- Do the duplication before mounting on the bike

Indicazioni di montaggio su **Moto Guzzi V7 850 - 2021** (Utile anche per altre moto / Also useful for other bikes)

2



3

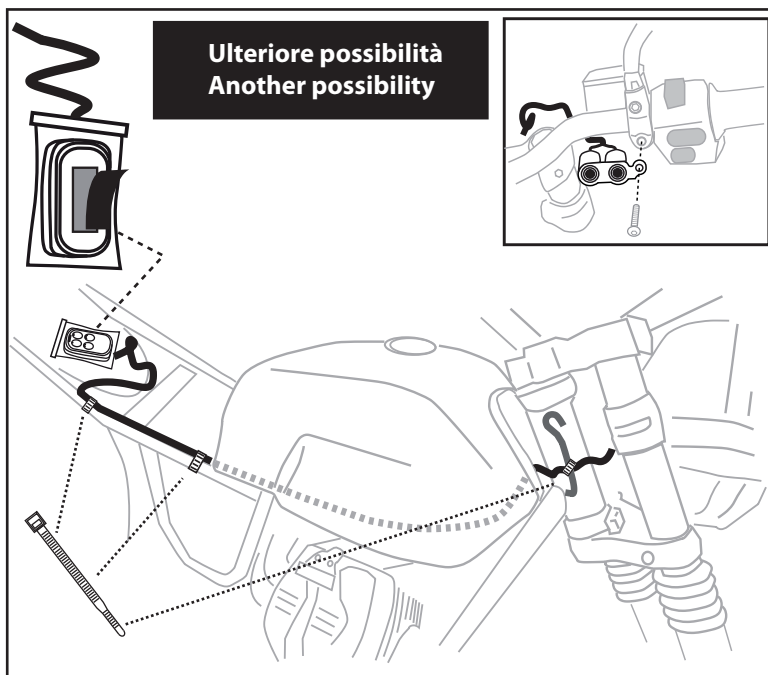
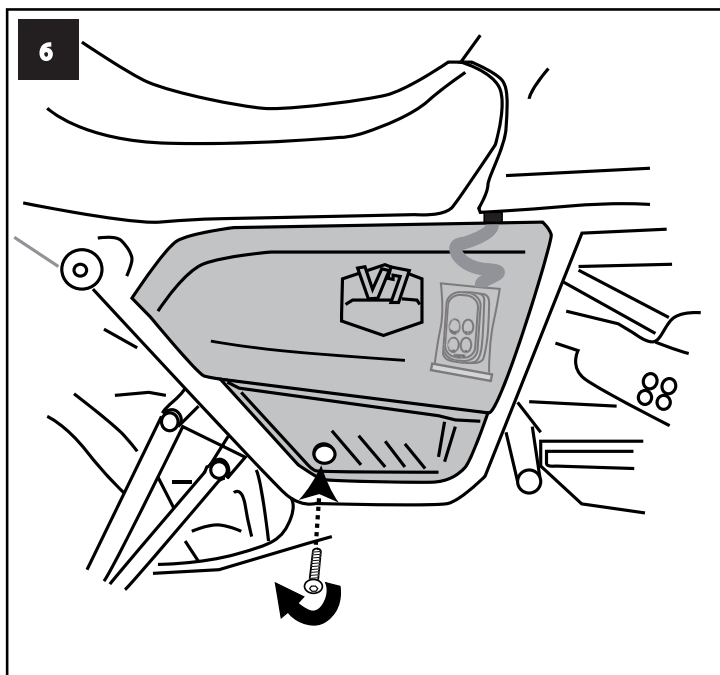
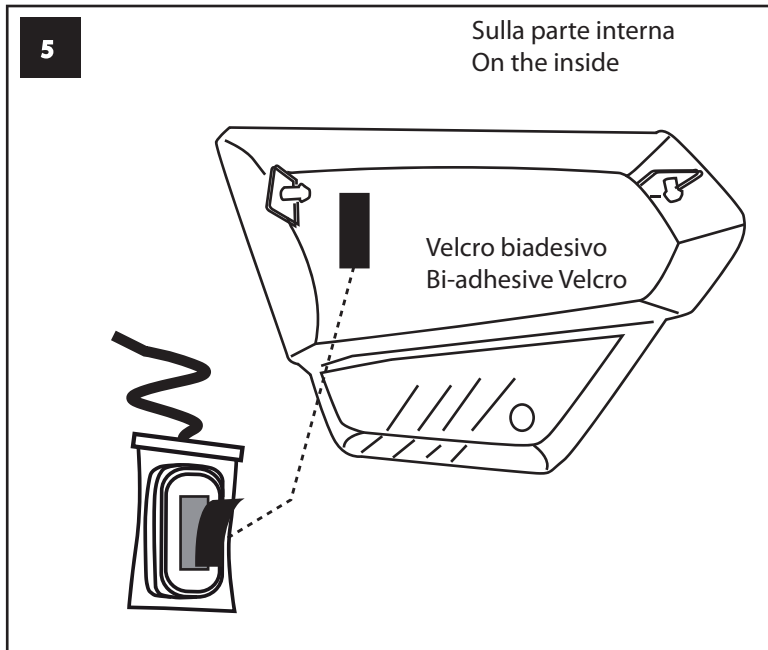
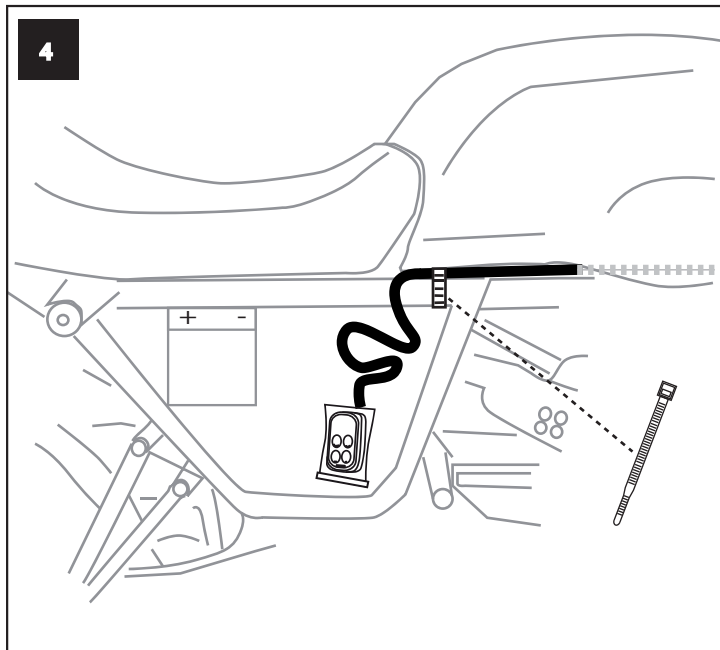




Radiocomando semiuniversale con doppio pulsante per Cancelli, Bandoni, Sbarre automatici. Semi-universal radio remote control with double button for gates, shutters, bars, automatic.

Biondi Srl - Via Ponte a Giogoli n.21 - 50019 Sesto Fiorentino (FI)

www.bondiaccessori.it



I pulsanti ed il radiocomando sono a tenuta stagna. La pulsantiera si integra con i comandi della moto.
The buttons and the radio control are watertight. The push-button panel integrates with the motorcycle controls.



Accertarsi che la pulsantiera non tocchi sul serbatoio o su altre parti della moto ruotando lo sterzo in entrambe le direzioni, fino a fine corsa.

Make sure that the hand control does not touch the tank or other parts of the motorcycle by turning the steering wheel in both directions, up to the end of the stroke.